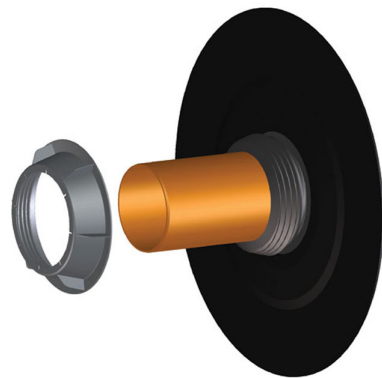


## HL800/160

sealing kit for pipe inflow channels DN160



sealing kit for pipe inflow channels for sealing pipes (plastic, cast iron, stainless steel) d 160 - 165 mm passing through walls (basement outer walls / base plates etc.). Massive lip seal with high-quality bitumen collar and rugged locknut - easy to slide on (also over pipe collars) and - due to the solely usage of elastic materials - attachable also near building corners. Leak tightness certified up to 6 m water column (also with tolerance of up to 10% from right angle)!



### techn. drawing



### MAIN DATA

#### spare parts

 **HL0800.2E**  
locknut DN160

#### attachment



## **HL801**

Multiple pipe fairlead



### **HL801B/M32**

Blind plug M32



### **HL801B/M40**

Blind plug M40



### **HL801B/M50**

Blind plug M50



### **HL801B/M63**

Blind plug M63



### **HL801R/M32-25**

Taper M32-25



### **HL801R/M40-25**

Taper M40-25



### **HL801R/M40-32**

Taper M40-32



### **HL801R/M50-25**

Taper M50-25



### **HL801R/M50-32**

Taper M50-32



### **HL801R/M50-40**

Taper M50-40



### **HL801R/M63-32**

Taper M63-32



### **HL801R/M63-40**

Taper M63-40



### **HL801R/M63-50**

Taper M63-50



### **HL801V/11-18**

Screw joint M25



### **HL801V/17-25**

Screw joint M32



### **HL801V/22-33**

Screw joint M40



### **HL801V/28-38**

Screw joint M50



### **HL801V/32-44**

Screw joint M63



### **HL801V/40-52**

Screw joint M63



### **HL801V/8-14**

Screw joint M25

## TECHNICAL DATA

<b>material</b>	Elastomer/Bitumen/PP	<b>installation height</b>	
<b>dimension</b>	DN160	<b>grate frame</b>	
<b>capacity</b>		<b>grate</b>	
<b>weight</b>	2,1	<b>load class</b>	
<b>EAN</b>	9003076021611	<b>inlet</b>	
		<b>standards</b>	DIN 19195-4

## PACKAGING DATA

### PE-bag

<b>unit</b>	1 [pcs.]
<b>weight</b>	2,15 [kg]
<b>EAN/pack.</b>	9003076021611
<b>height/width/depth</b>	0/0/0 [mm]
<b>volume</b>	0 [m <sup>3</sup> ]

### carton

<b>unit</b>	1 [pcs.]
<b>weight</b>	2,654 [kg]
<b>EAN/pack.</b>	9003076021611
<b>height/width/depth</b>	93/580/580 [mm]
<b>volume</b>	0,0312852 [m <sup>3</sup> ]